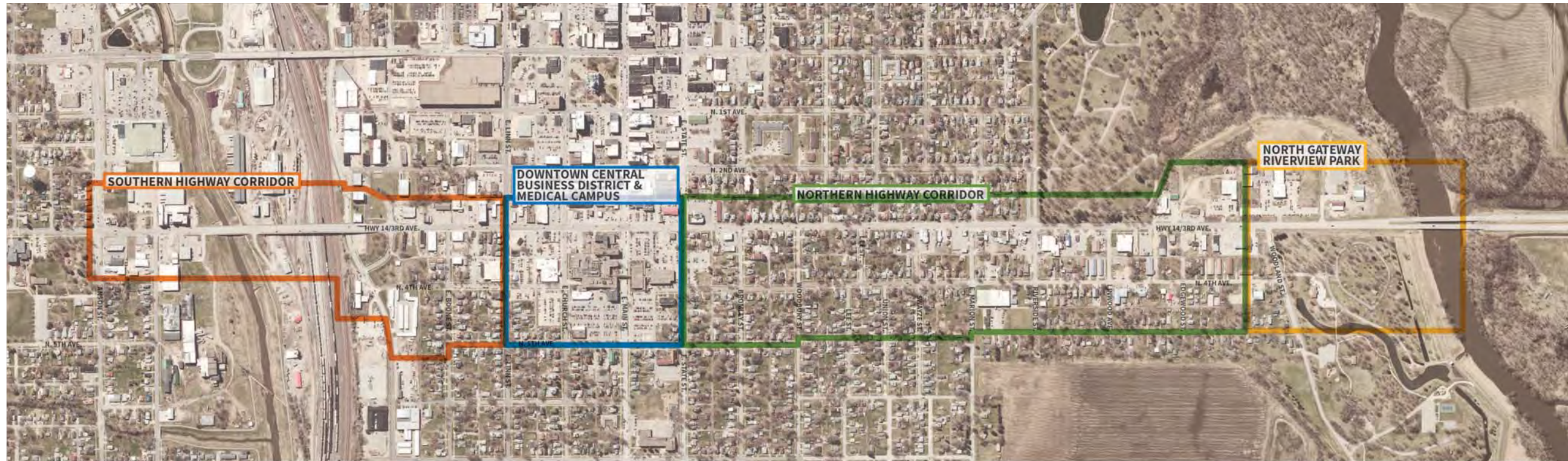


# CORRIDOR FOCUS AREAS



## SOUTHERN HIGHWAY CORRIDOR

- Southern gateway opportunity
- Prominent intersection experience at Anson St.
- Corridor connection to Anson Park
- Redevelopment and urban infill opportunities
- Connections to residential neighborhoods

## DOWNTOWN CENTRAL BUSINESS DISTRICT & MEDICAL CAMPUS

- Critical entrance points to Downtown
- Prominent intersections and pedestrian access points
- Exposure and arrival opportunities for downtown businesses
- Anchored by medical campus
- Redevelopment and urban infill opportunities

## NORTHERN HIGHWAY CORRIDOR

- Transition zone into downtown
- Mix of land use and zoning
- Constrained ROW in areas, creating narrow sidewalks and limited pedestrian accommodations
- Primary truck entrance/access point for JBS
- Variable ROW width

## NORTH GATEWAY & RIVERVIEW PARK

- Gateway entrance to City, the first impression
- Prominent intersection and entrance to Riverview Park
- Speed transition zone from rural highway into urban area
- Wide ROW with opportunities for pedestrian accommodations, monumentation and streetscape amenities

# CORRIDOR IMPROVEMENT CONCEPTS



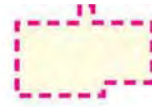
INTERSECTION IMPROVEMENT OPPORTUNITY



GATEWAY/MONUMENT OPPORTUNITY



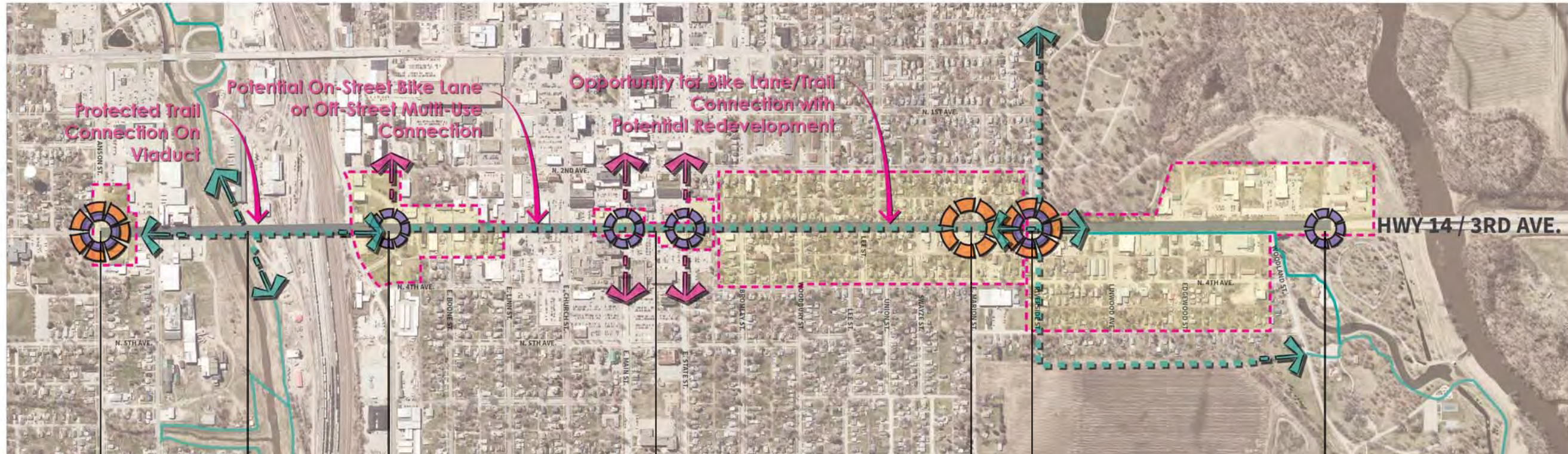
ROAD DIET OPPORTUNITY



URBAN REVITALIZATION AREA



BIKE/TRAIL CONNECTION



## ANSON STREET INTERSECTION

- Improve lane delineation
- Expand pedestrian accommodations
- Consider Roundabout to reduce traffic congestion, provide streetscape amenities and encourage economic development

## VIADUCT TRAIL CONNECTION

- Establish protected bike lane/trail connection across viaduct to connect Anson Park to Linn Creek Trail and improve access to downtown

## DOWNTOWN ARRIVAL

- Create a 'gateway' entrance to downtown with redevelopment opportunities and streetscape enhancements

## DOWNTOWN CONNECTIONS

- Enhance downtown connections with wayfinding signage/monuments
- Improve safety of intersections and expand pedestrian amenities
- Expand opportunities for public open space

## MARION STREET INTERSECTION

- Redesign intersection to reduce conflict and provide safer turning movements for trucks traveling to plant

## RIVERSIDE STREET

- Re-align intersection and remove boulevard space
- Consider roundabout opportunity
- Provide future trail connection

## ARRIVAL EXPERIENCE

- Create 'gateway' opportunity to enhance the arrival experience into town
- Begin 3 lane cross section
- Improve streetscape amenities and expand pedestrian opportunities

