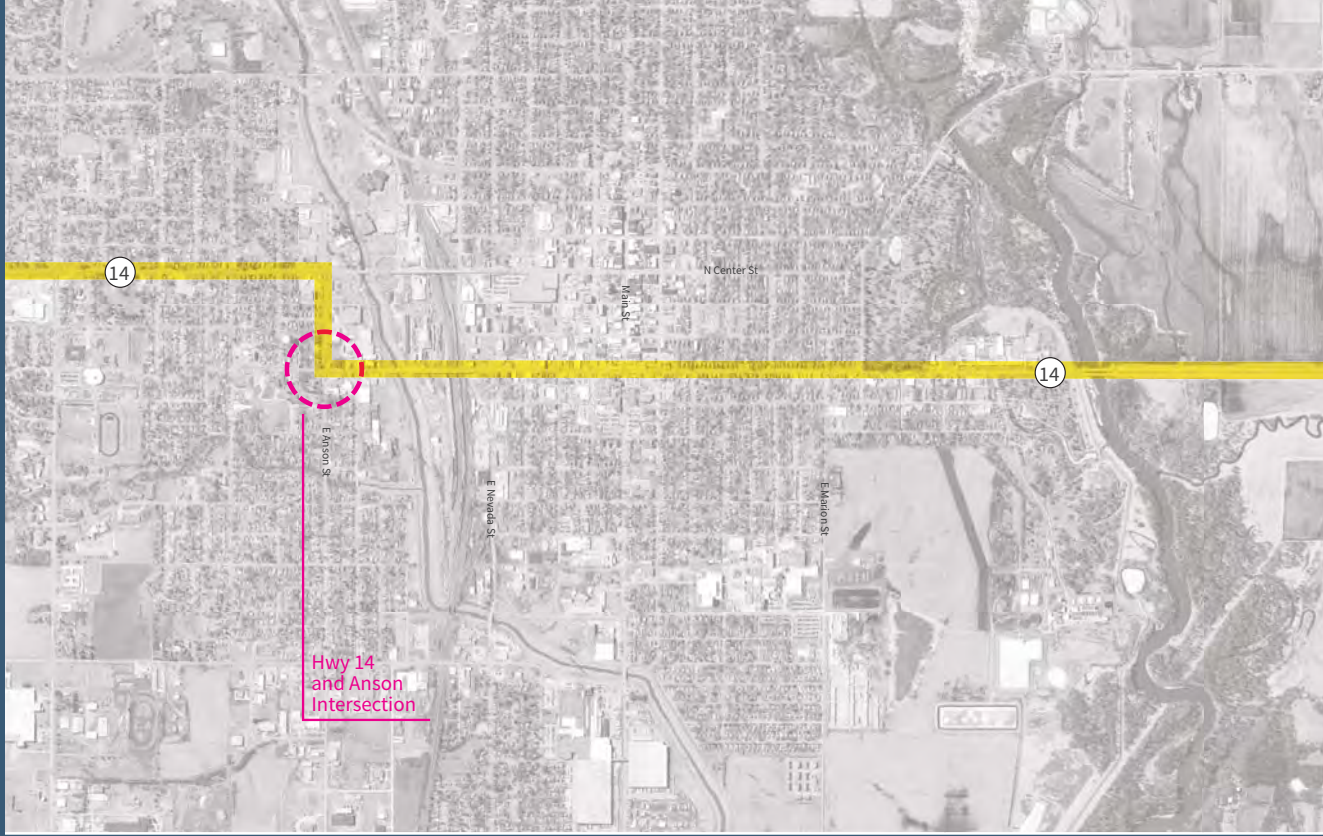


1 ANSON STREET AND HIGHWAY 14

I LIKE...

LOCATION MAP



NOTES

- At this intersection, the Highway 14 route diverts from 3rd Street to west on Anson Street to access Center Street



EXISTING CONDITIONS AND OPPORTUNITY

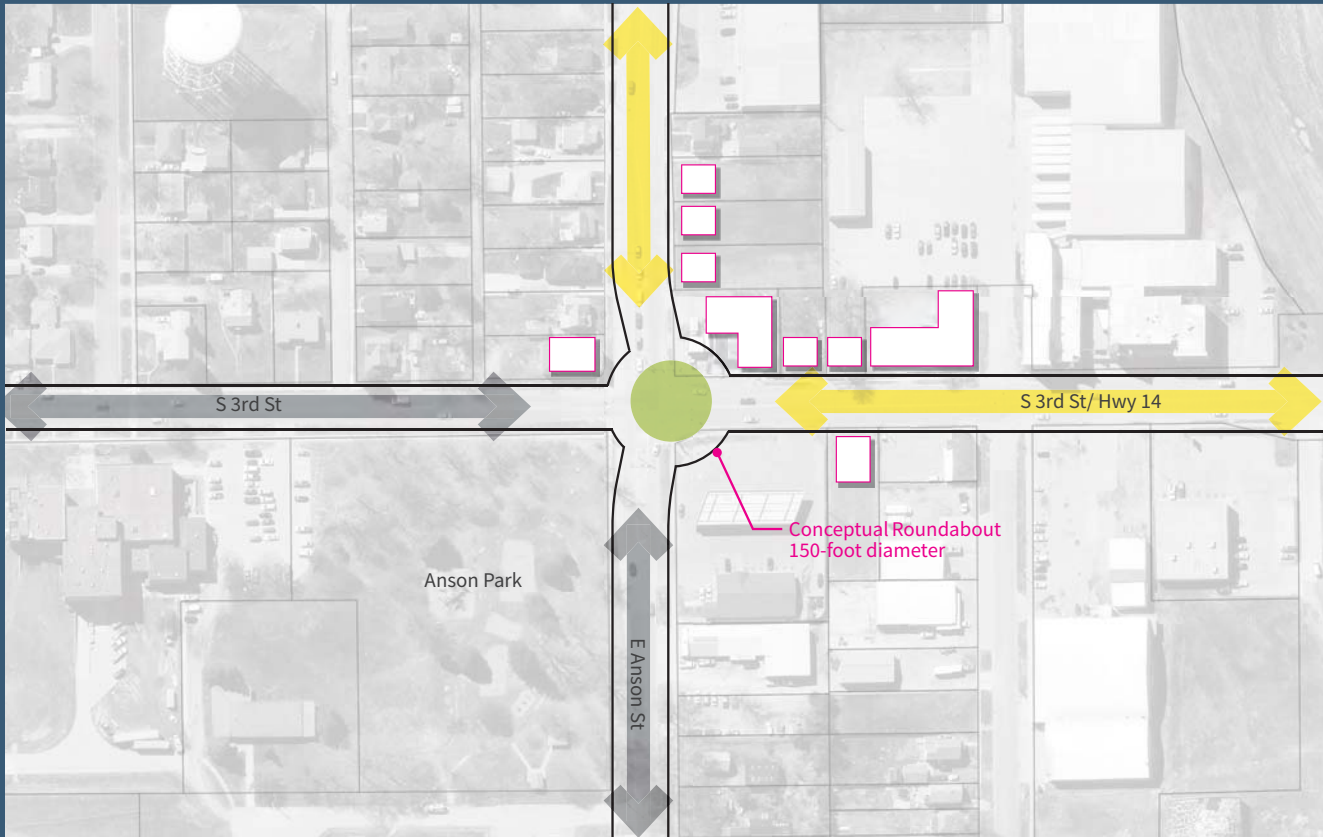


NOTES

- Vacant and underutilized parcels are a development opportunity
- Anson Park is a public asset at this intersection
- The gas station reports that some vehicles pass through the lot to avoid the intersection



ROUNDBOUT OPTION



NOTES

- A roundabout at this location has the potential guide traffic along the Highway 14 route
- The flow of traffic could prevent drivers from passing through corner lots to avoid the intersection
- Creates redevelopment opportunities
- Allows for more beautification amenities and pedestrian accommodations
- Creates a safer intersection with fewer conflict points



MARCH 2018