

## 2010 Iowa Code Installation

### Step 1.

On the Admin server (I:\) for most users, locate the **Iowa Code** directory and double-click on it. Once inside, locate the **setup.exe** file (shown highlighted in Figure 1). Double-click on setup.exe to start the installation program.

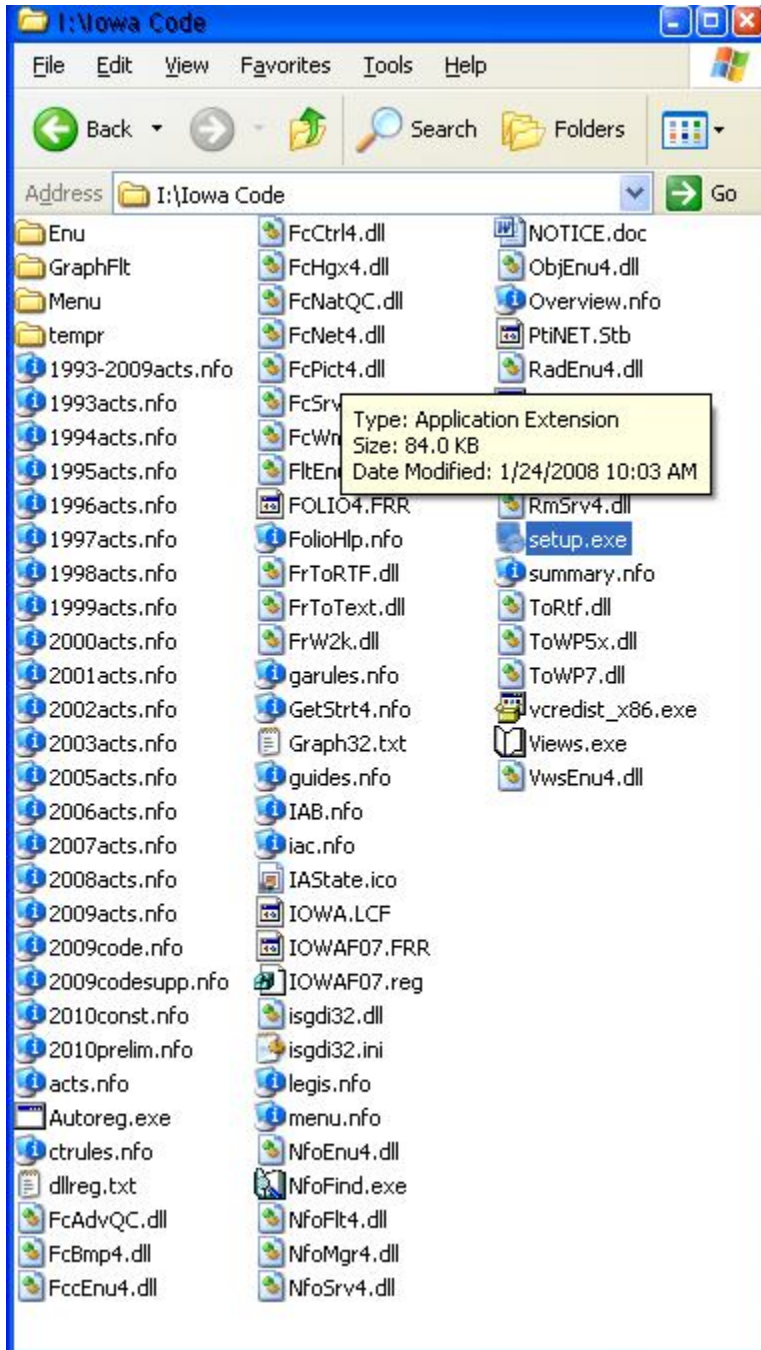


Figure 1.

## Step 2 – The Installation Poces

The **Welcome** panel opens (Figure 2). Click **Next**.

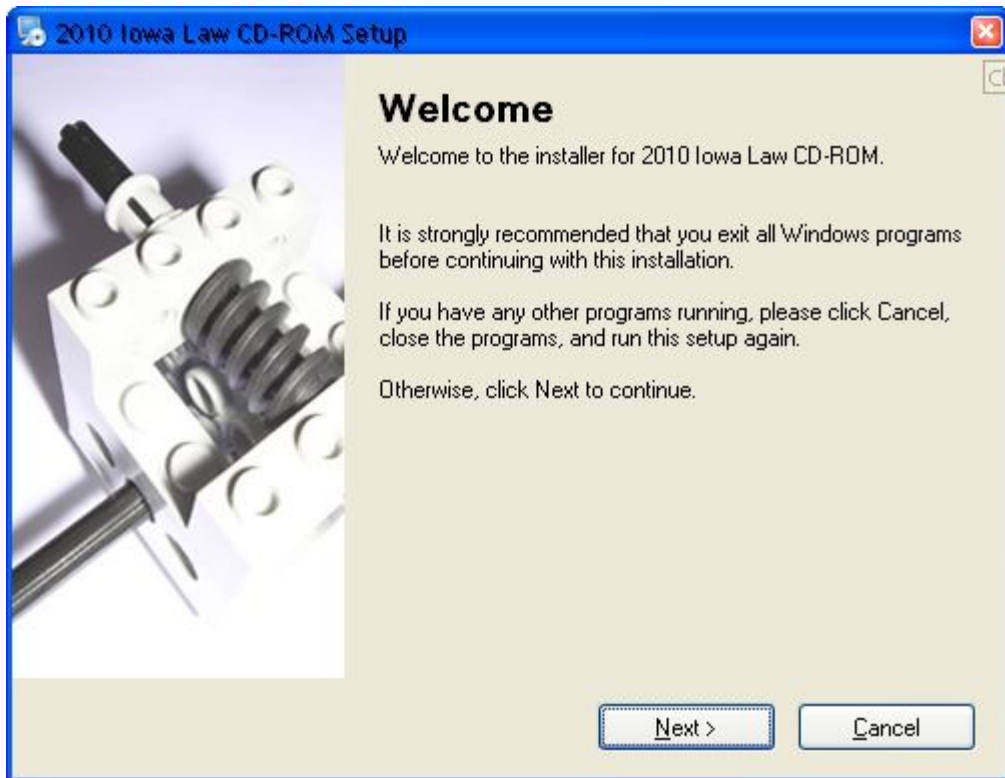


Figure 2.

By default the Installation program installs the Iowa Code to a local directory on your C:\ drive, as shown in Figure 3. To accept the default path, just click **Next**.

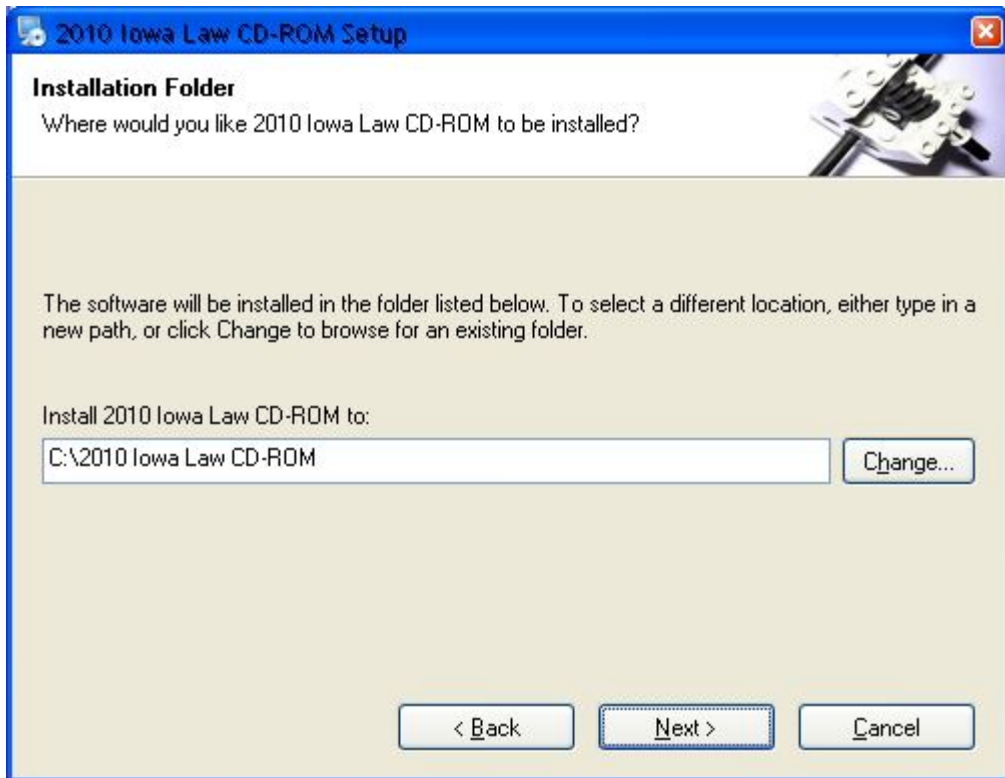


Figure 3.

When the “Ready to Install” panel appears (Figure 4), click **Next** to begin copying the files to your local drive.

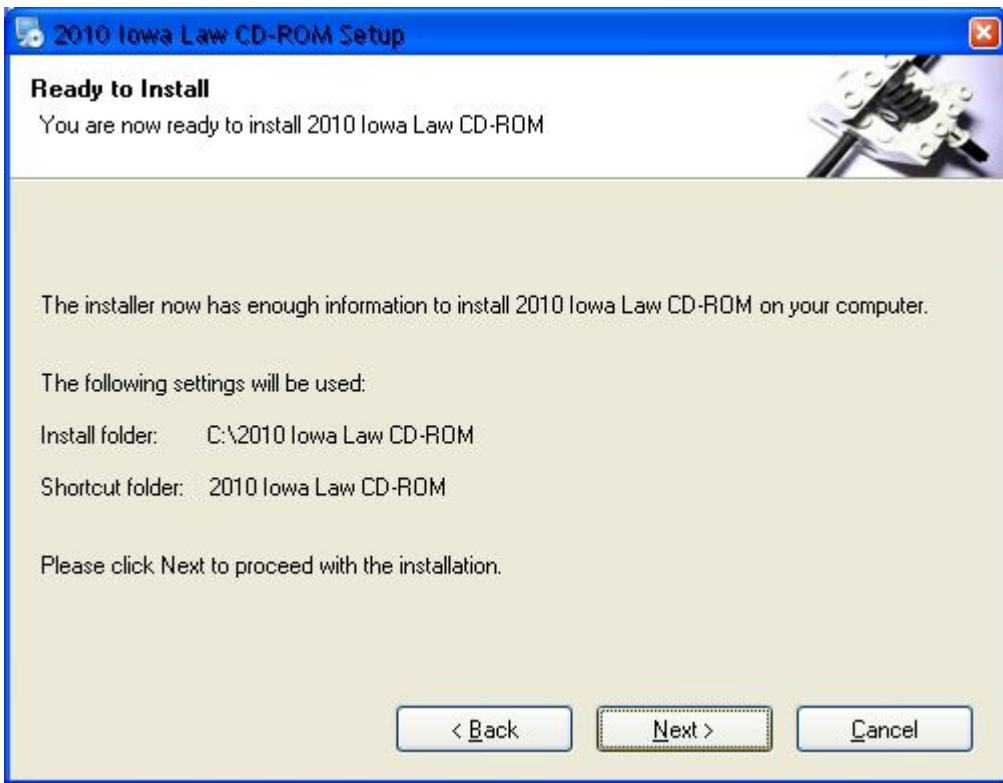


Figure 4.

The progress window appears (Figure 5). After a minute or two, you will see several pop-up windows appear and clear in rapid succession, followed by the one shown in Figure 6.

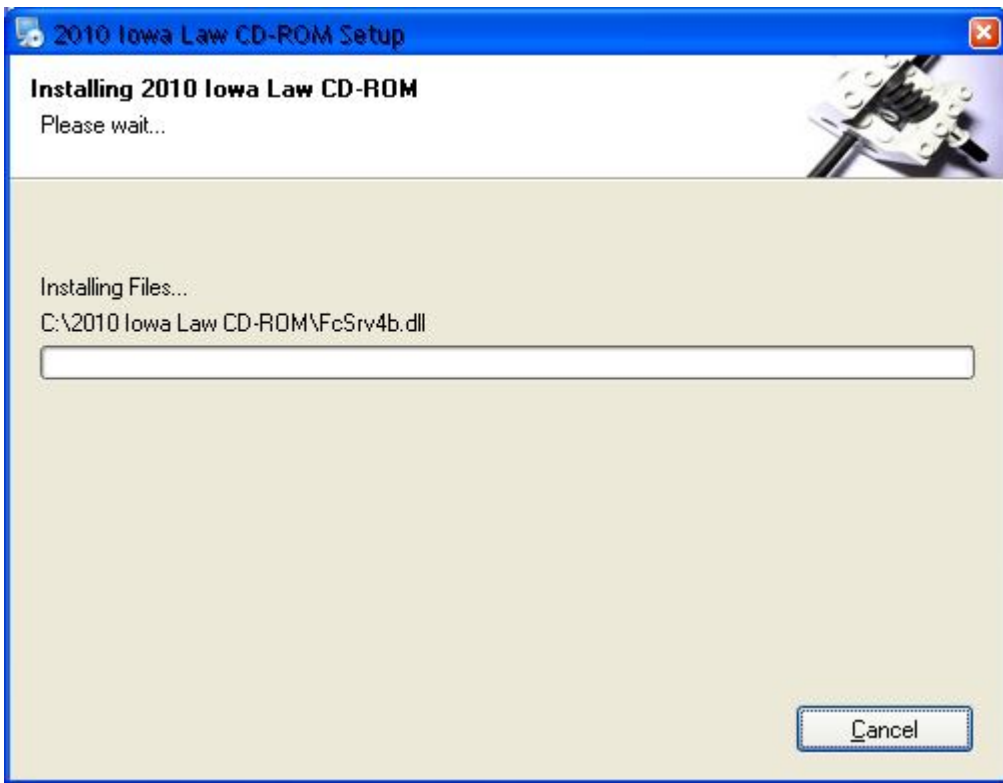


Figure 5.

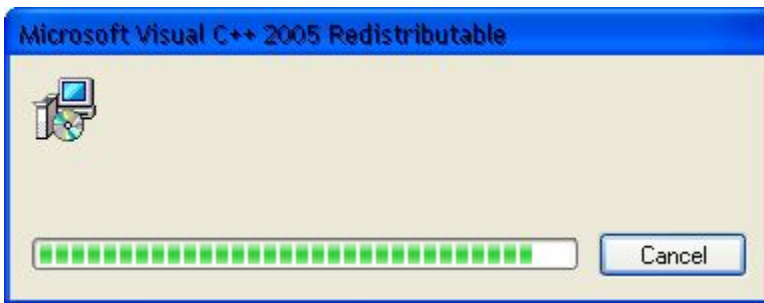


Figure 6.

After the C++ process in Figure 6 has finished, you will see the **Installation Successful** window shown in Figure 7. Click **Finish**. You will find the code in your Start menu, listed as **2010 Iowa Law CD-ROM**.

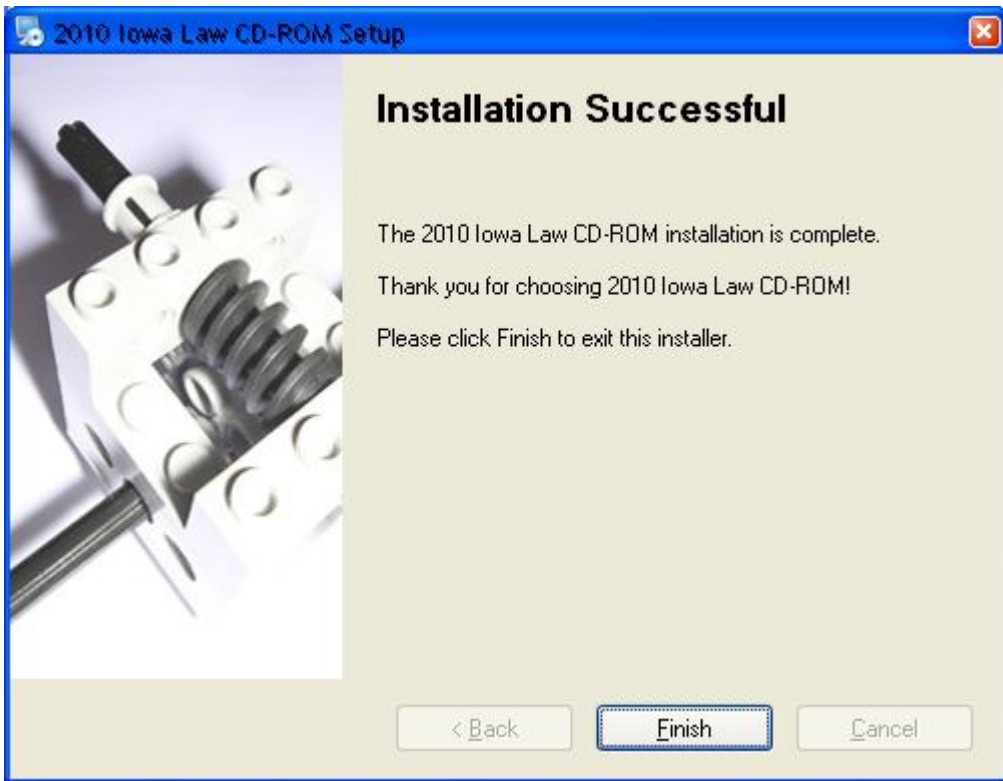


Figure 7.